

PANOMORPH INSTITUTE



Introduction

In recent years, ImmerVision developed patented optic technology combined with 360° panomorph lenses and immersive software algorithms to enable 360° functionalities for any application in industries, such as aerospace, defence, telecommunications, robotics, video surveillance, medical and automotive.

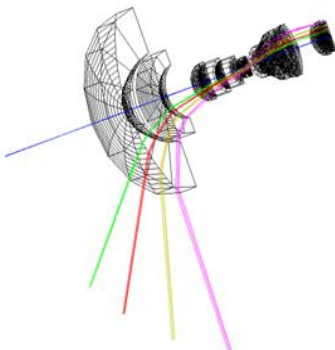
Following this success, ImmerVision has decided to share its panomorph know-how with highly skilled optical researchers to enable the development of emerging technologies and applications. In a spirit of collaboration and to stimulate creativity and innovation, we founded the Panomorph Design Institute and launched the Panomorph Optical Designer Certification Program. Reserved for the best optical designers, the Certification Program will provide you with the tools, knowledge and environment to create the panomorph optics of tomorrow.



Benefits

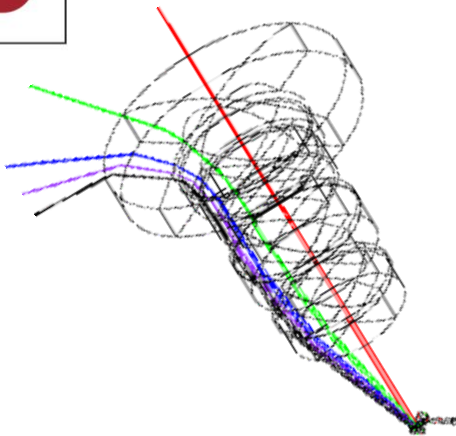
For optical designer

- ✓ Gain an externally recognized mark of excellence that clients seek in an innovative type of optical design
 - ✓ Access to a set of design productivity tools
- ✓ Promote a more globally applicable accreditation with higher billable rates
- ✓ Access a community of Panomorph associate-level certified peers (forum)



For the company

- ✓ Create their own 360° panomorph product and solution
 - ✓ Retain know-how and talent
- ✓ Take care of its own manufacturing capabilities and constraints
 - ✓ Increase project development speed
- ✓ Internally control development cost and schedule



Admission Conditions

- ✓ MSc degree and a minimum of 5 years experience in optical design
- ✓ Past experience with lens prototyping and manufacturing constraints (optimization tolerance and thermal analysis)
- ✓ Past experience with molded lenses (glass and/or plastic), aspheric lenses and ideally with cylindrical, toroidal or freeform lens designs

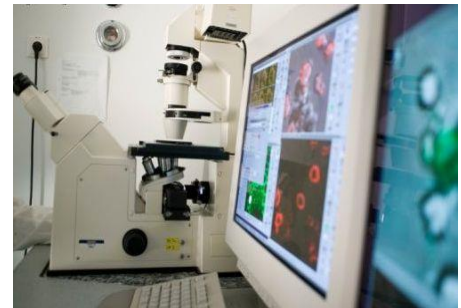
Coaching program

According to your needs and requests and to support your panomorph optical design process, ImmerVision provides coaching time delivered by an ImmerVision optical designer (either at ImmerVision's office or at candidate's).

The coaching covers 7 modules:

- Panomorph specifications
- Panomorph optical design
- Panomorph optical optimization
- Panomorph optical analysis & validation
- Panomorph optical tolerance
- Panomorph optical thermal analysis
- Opto-mechanical Design

In addition, a specific training will be offered on Panomorph Geometrical Model Simulator.



Ask ImmerVision

- ✓ The coaching outline
- ✓ The Certified Panomorph Optical Designer Charter



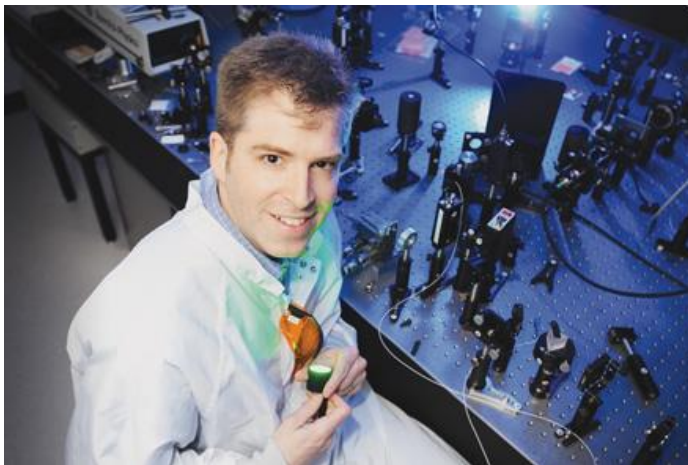
Fees

Please contact ImmerVision for a quote.

<https://www.immervisionenables.com/contact-us/>



**For further information about the program
please contact:**



**Professor Simon Thibault,
MSc, Ph.D, Eng.**

ImmerVision

Principal Optical Designer

Director – Panomorph Institute

simon.thibault@immervision.com

Tel: +1 (514) 985-4007 x3018

Cell: +1 (418) 261-0049 (preferred)

Fax: +1 (514) 282-8612

